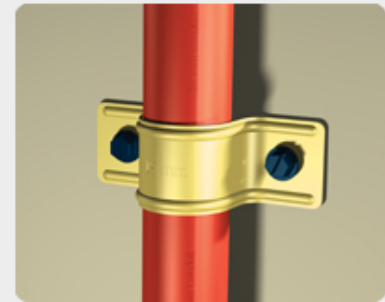




Tapcon®



Tapcon fixes directly into pre-drilled holes in concrete and brick, as well as pre-cast panels, lightweight cement blocks, without inserts or chemicals.



Product Features



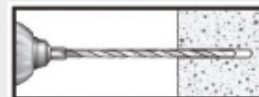
Blue Climaseal®

- Fast installation: drill a hole and drive an anchor.
- No inserts are required.
- Reversible and removable.
- Can be installed close to the edge of concrete.
- Thread design results in increased pullout values and lower installation torques.
- Climaseal® coating provides extra corrosion resistance.
- Recommended for use in ACQ pressure-treated lumber.

How To Use

Drill

Using a hammer drill, drill a hole 1/4" deeper than anchor embedment.



Slide (optional)

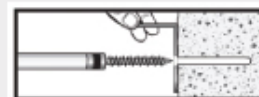
Slide Condrive installation tool over drill bit and drill adapter and position Tapcon concrete anchor onto tool.



Drive

Drive Tapcon anchor into pre-drilled hole until anchor is fully seated.

Tapcon anchors require a minimum embedment of 1" and a maximum embedment of 1-3/4".



Countersunk Head

For jobs needing a flush finish
eg. brackets, window frames, light fittings, timber.



Gauge	Length	Pack Qty	Part Number
4.8mm - 3/16"	1 1/4 (32mm)	100	3169407
	2 1/4 (55mm)	100	3173407
6.4mm - 1/4"	1 1/4 (32mm)	100	3183407
	2 1/4 (55mm)	100	3187407

* All TAPCON boxes of 100 come complete with the required TAPCON drill bit.

Hexagon Head

For general fixing to masonry
eg. signs, fences, hose reels.



Gauge	Length	Pack Qty	Part Number
4.8mm - 3/16'	1 1/4 (32mm)	100	3139407
	2 1/4 (55mm)	100	3143407
6.4mm - 1/4'	1 1/4 (32mm)	100	3153407
	2 1/4 (55mm)	100	3157407

* All TAPCON boxes of 100 come complete with the required TAPCON drill bit.
Minimum order quantities do apply.

Technical Specifications

Ultimate Average Pullout Loads

Diameter	Embedment	25 mPA concrete	32 mPA concrete	Hallow Block	Brick
4.8mm	25mm	309	312	276	175
4.8mm	38mm	529	498	383	289
6.4mm	25mm	364	366	391	244
6.4mm	38mm	531	572	494	478

Mechanical Properties

Single Shear Strength	5050N (4.8mm)	9850N (6.4mm)
Torsional Strength	7.1Nm (4.8mm)	17.2Nm (6.4mm)